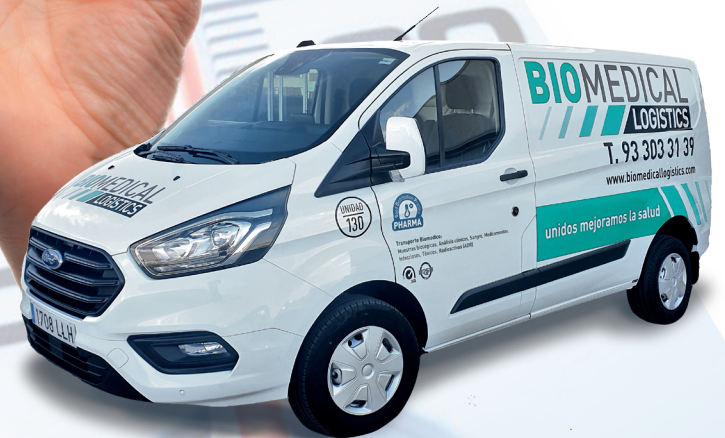


Customised solutions for Global Storage and Transport at Controlled Temperature



Tel. 902 181 180

www.biomedicallogistics.com

www.azalogistics.es



A 360° programme in Pharma transport

www.biomedicallogistics.com

www.azalogistics.es

HABITUAL PROBLEMS

1. Temperature deviations.
2. Service conditioned by the size of the company.
3. Lack of customer attention.
4. Lack of attention by professionals.
5. Lack of global visibility in the supply chain
Loss of biological samples/drugs.
Not collected within the established time.
Delivery to the wrong destination.
6. Lack of solutions for incidents.
7. Lack of comprehensive supply chain solutions
8. Restricted service times.
9. Insufficient knowledge regarding regulations on transporting biological substances.
10. Increased carbon footprint.

OUR SOLUTIONS

1. National and International logistics and transport by air and land at controlled temperature. Our own dataloggers and probes in warehouses. With built-in temperature and humidity alarms.
2. A personalised and flexible service for every client.
3. A single operation manager assigned to the client's account.
4. Pharmaceutical personnel in our workforce. GDP-compliant transport of drugs
5. TrAZAL/IHL software to monitor order status. Control tower. Geolocation and monitoring of packaging in real time.
6. Incident manager and follow-up of Tickets
7. Technical support and consultancy.
8. NON-STOP service (24 hours a day, 365 days a year).
9. Specialist consultancy (Pharma-biological).
10. Sustainable packaging, reusable, focused on circular economy.



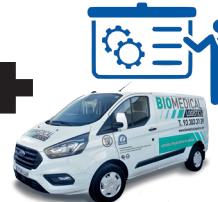
Sectorised storage at a controlled temperature.
Alarm system



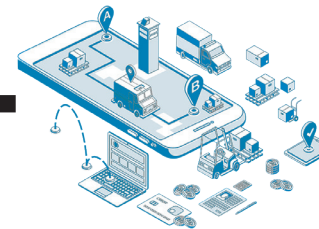
Rental of isothermal packaging for any temperature range



Preparation of packaging with temperature control



Route planning and validation



View the supply chain



Personalised attention.
Troubleshooting



High level of **quality**



High level of **service**



Comprehensive **solutions**



Development of **economically profitable**